

Ralph C. Wilson, Jr. Centennial Park

Ralph C. Wilson, Jr. Foundation | University at Buffalo Regional Institute
17 January 2019

Michael Van Valkenburgh Associates Inc.

Who is MVVA?

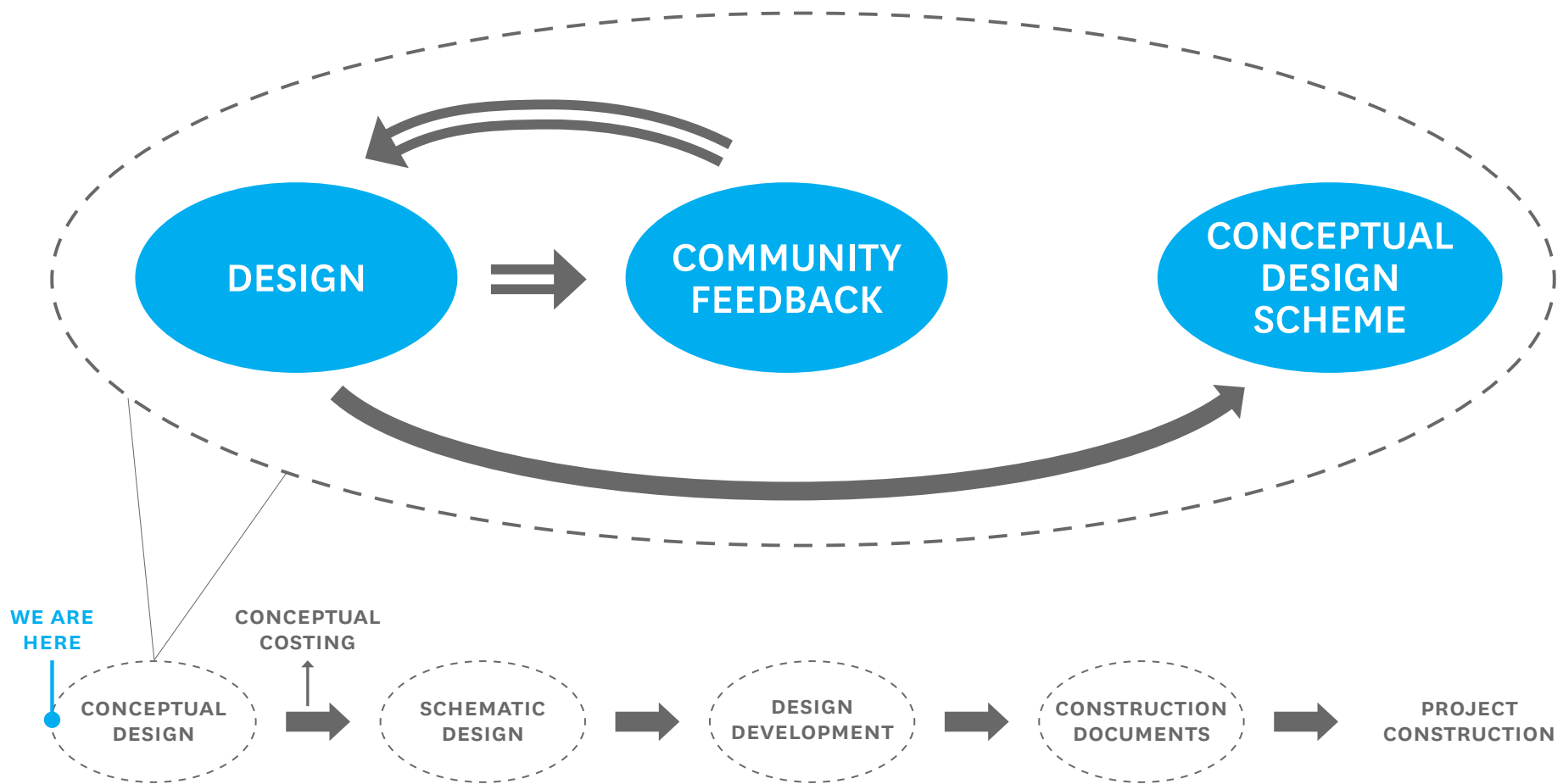


Brooklyn Bridge Park, Brooklyn, NY

How do we work?

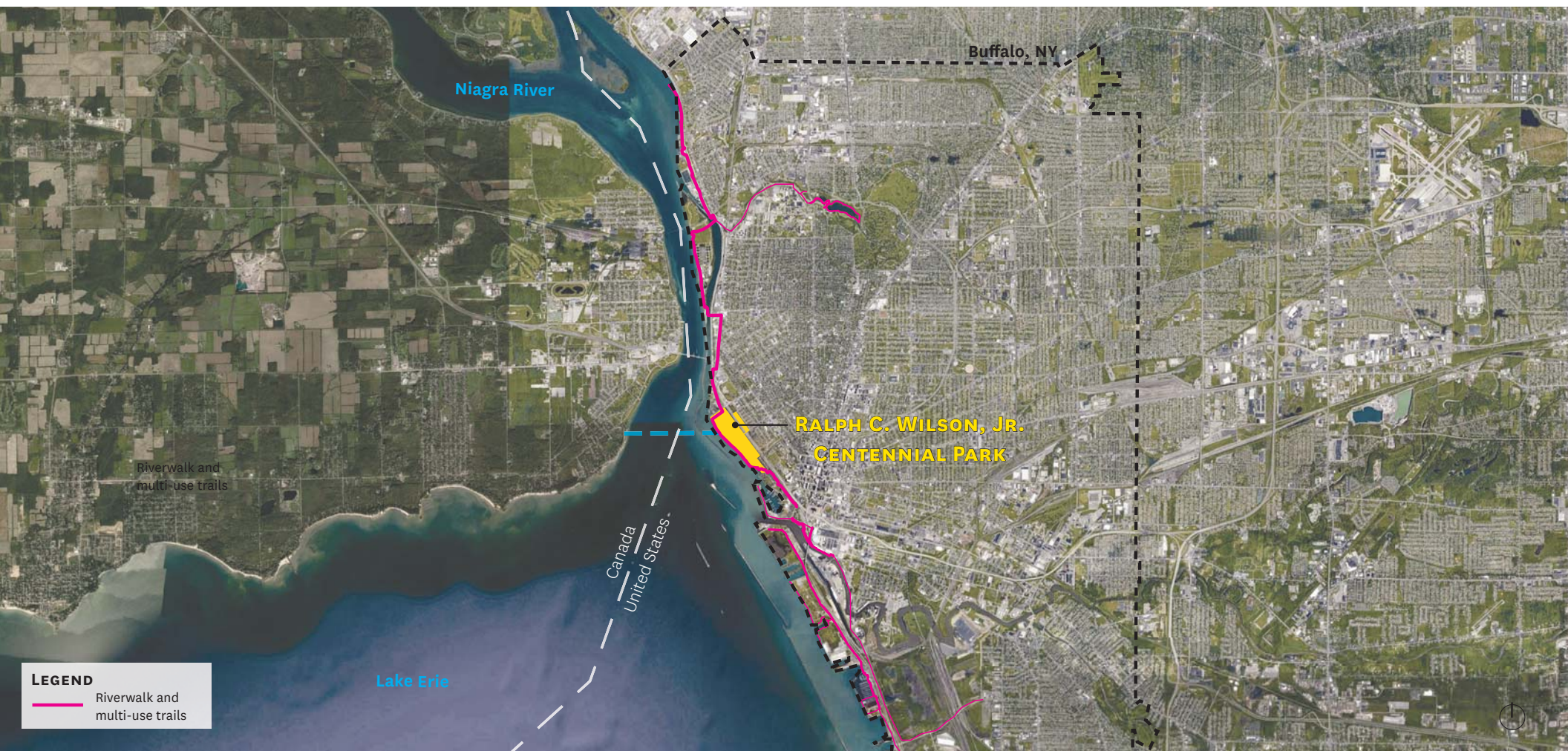


Design Process: Internal Design Development + Community Workshops



Concept Development Phase Workflow

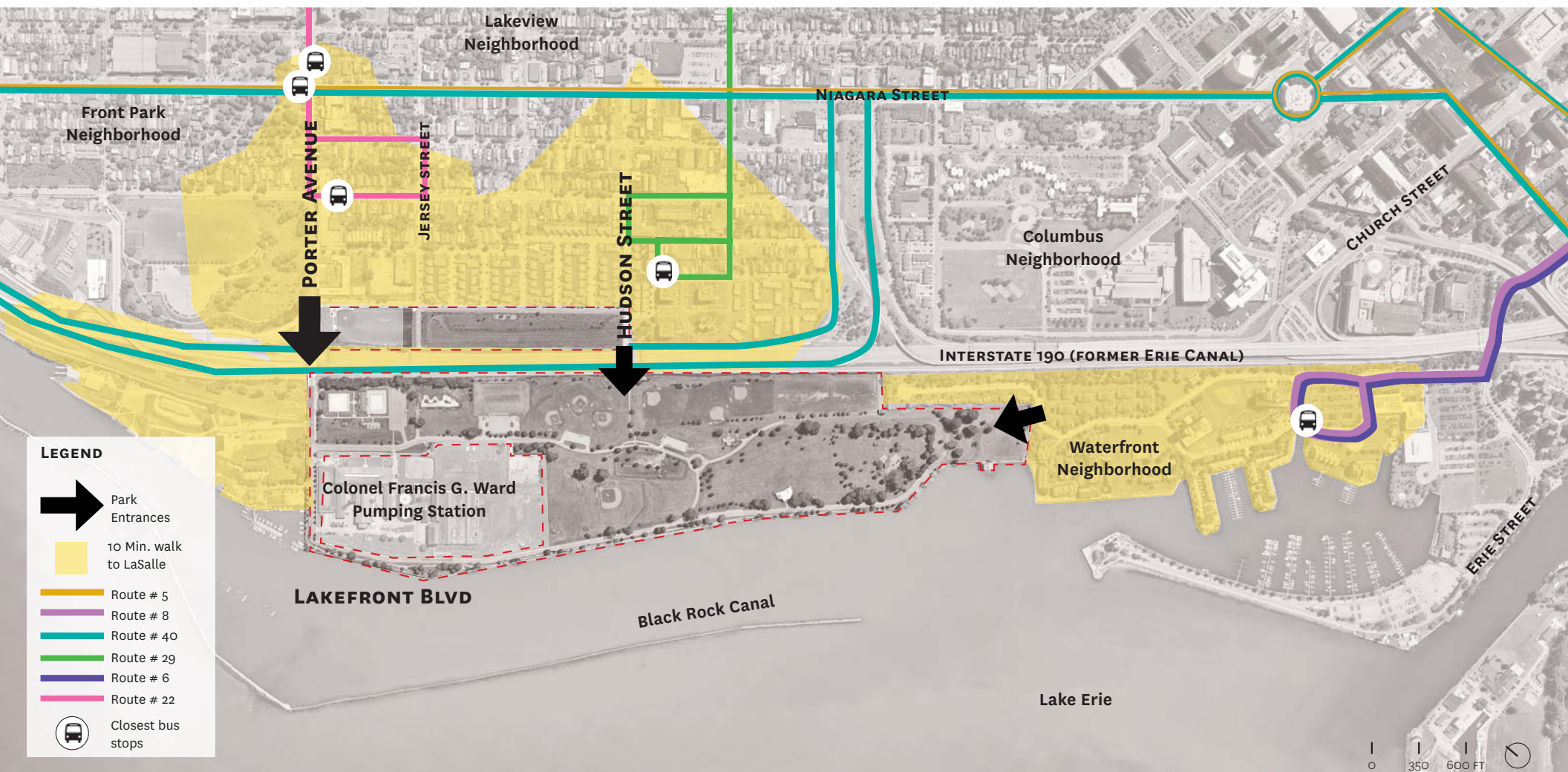
Existing Conditions Analysis



Project Site in Context



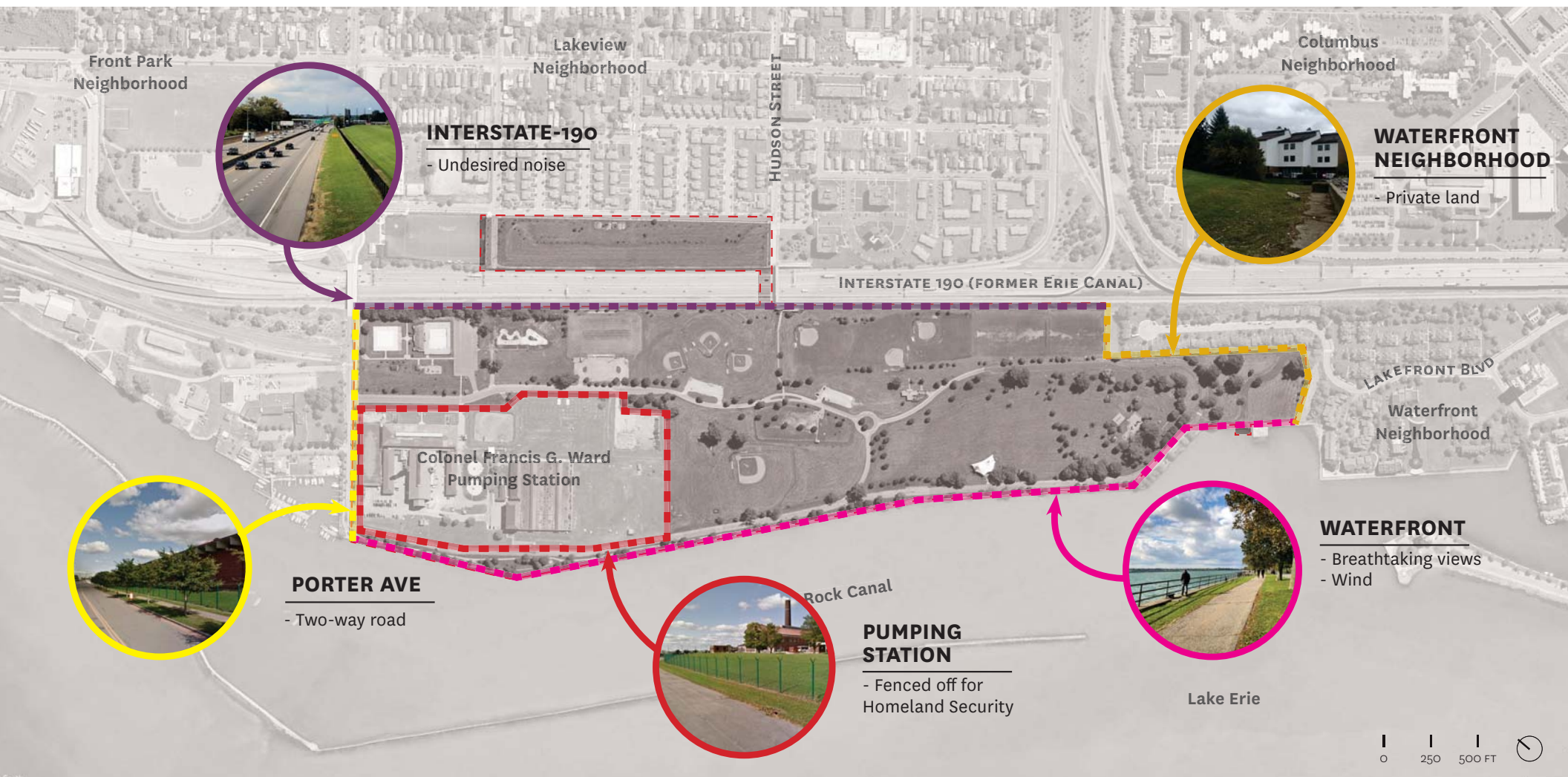
Project Site



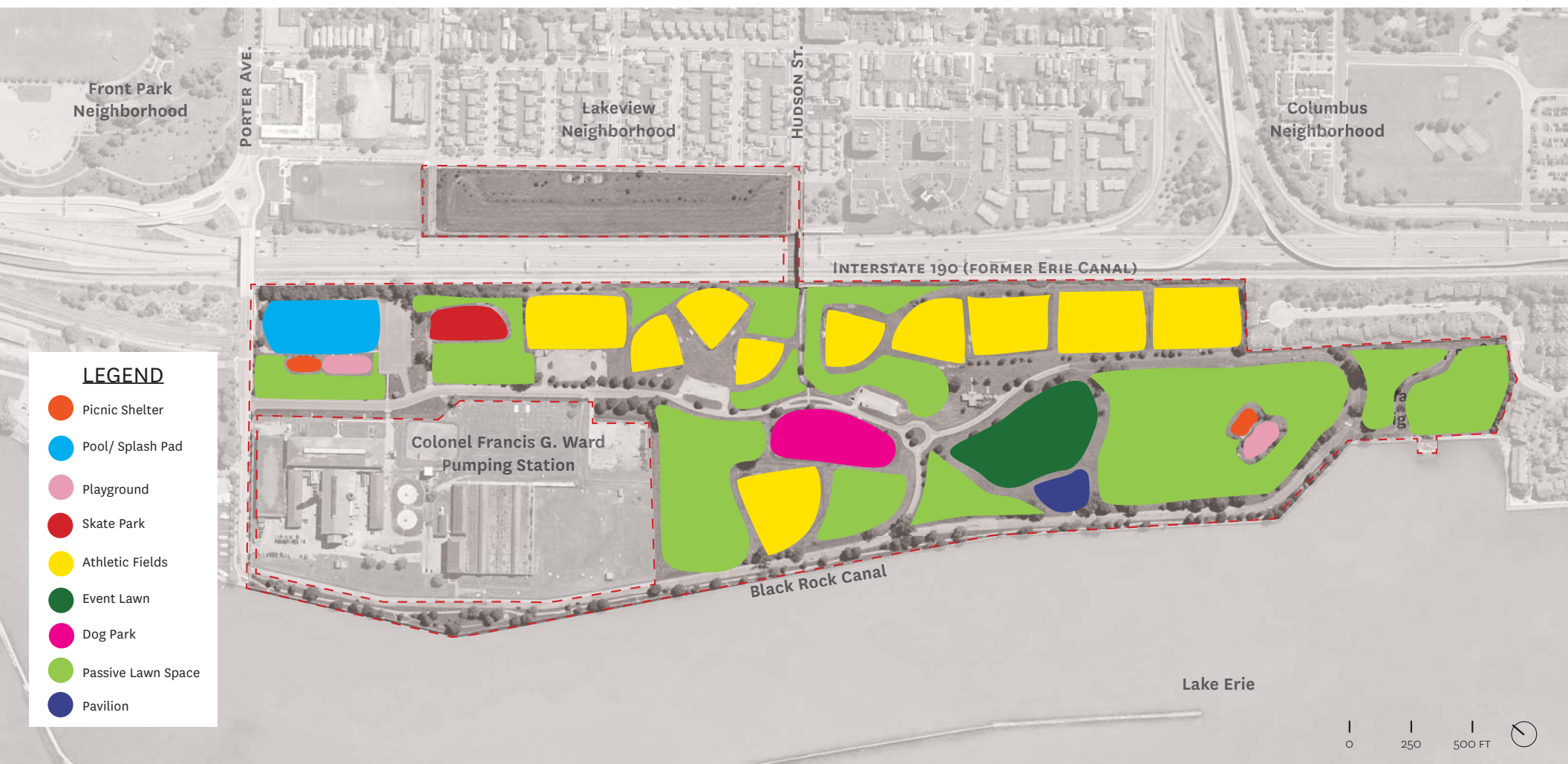
Existing Park Access + Urban Connections



Existing Park Circulation

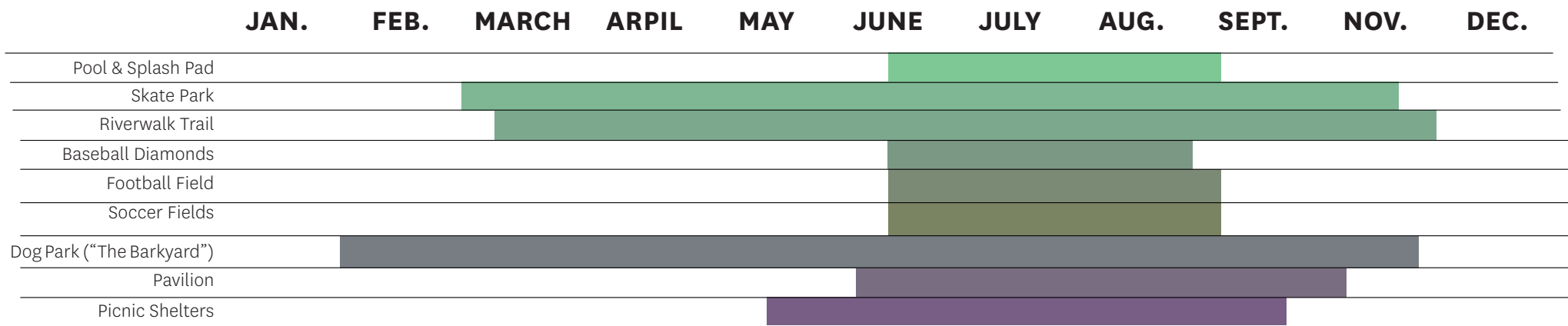


The Edges of the Park



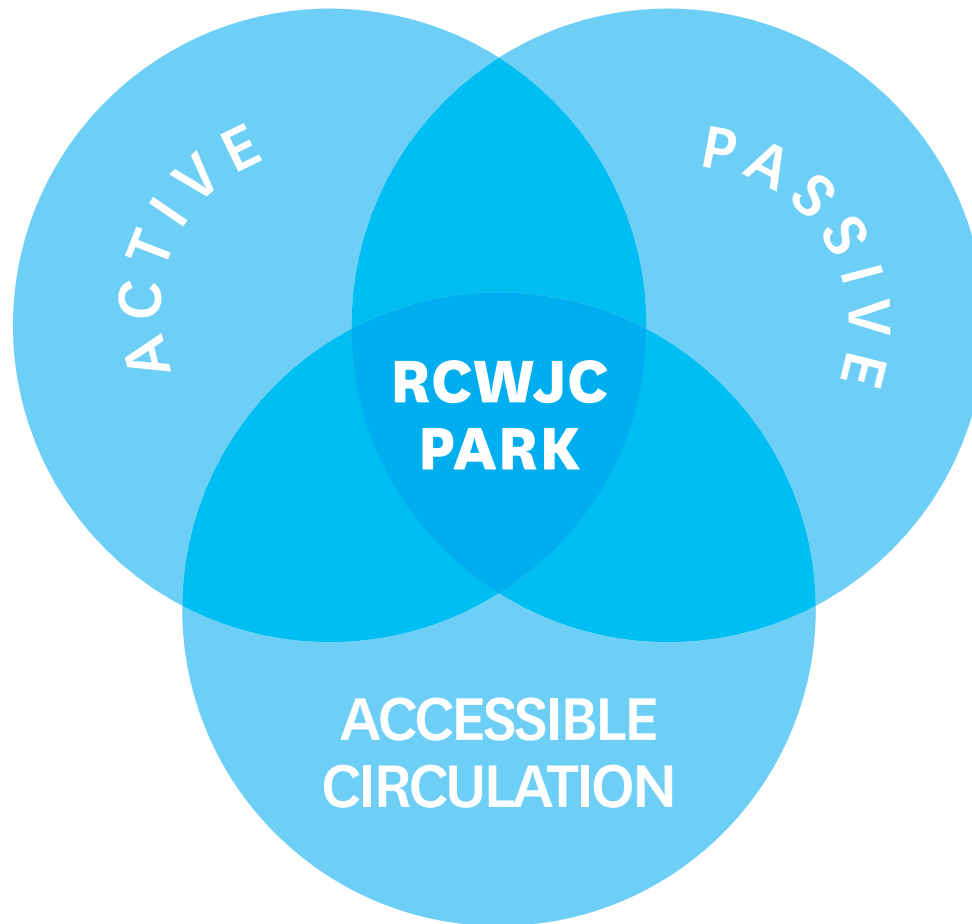
Existing Programming

Seasonal Park Use





Existing Planting



Correct Mix of Uses

Initial Design Observations

1. Build on the Strengths of LaSalle Park while Transforming it into Ralph C. Wilson Jr., Centennial Park.

Develop LaSalle into a world class park through strategic interventions and overall enhancements that build on what the community already values about it and the site's unique assets.



LaSalle Park is a Welcoming Place for All



It Supports Activities for Different Interests and Age Groups



Flexible Spaces Accommodate Large Gatherings and Events



Various Athletic Facilities Serve the Surrounding Diverse Community



The Site is Powerful and Boundless



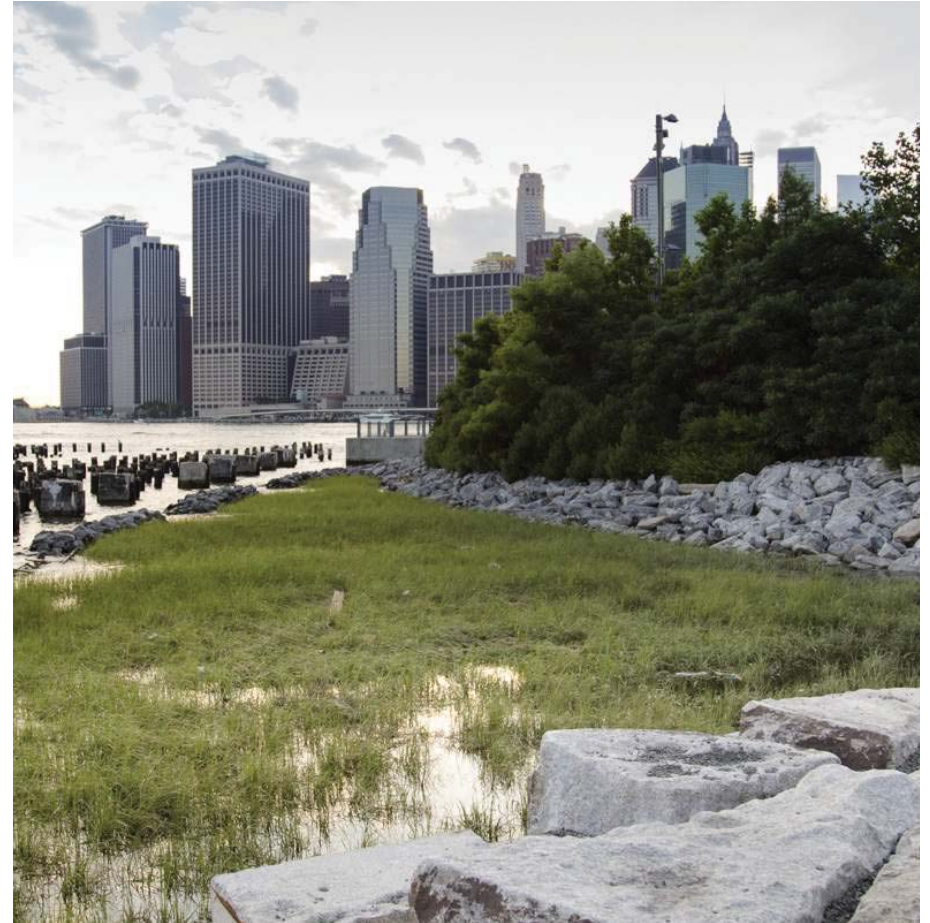
Waterfront Views are Exceptional

2. Re-imagine the Waterfront and Engage the Rest of the Park.

Integrate a mix of hard and soft edges along the waterfront that reveal daily and seasonal water level changes and provide opportunities for the community to interact with the water in diverse ways.



Distinct Shoreline Treatments Add Experiential Complexity along the Waterfront



Embrace the Water's Edge



Engage the Water

3. Enrich the Park Experience with Topography and Planting.

Introduce topography and planting to articulate spaces, hide and reveal views, block undesired sounds and sights, add rhythm and complexity to circulation network, display seasonality, and provide protection from elements.



Planting and Topography Articulate Spaces and Create Flow Between Them



Subtle Elevation Changes Enhance Movement through the Park



Landforms Block Undesired Noise and Sights



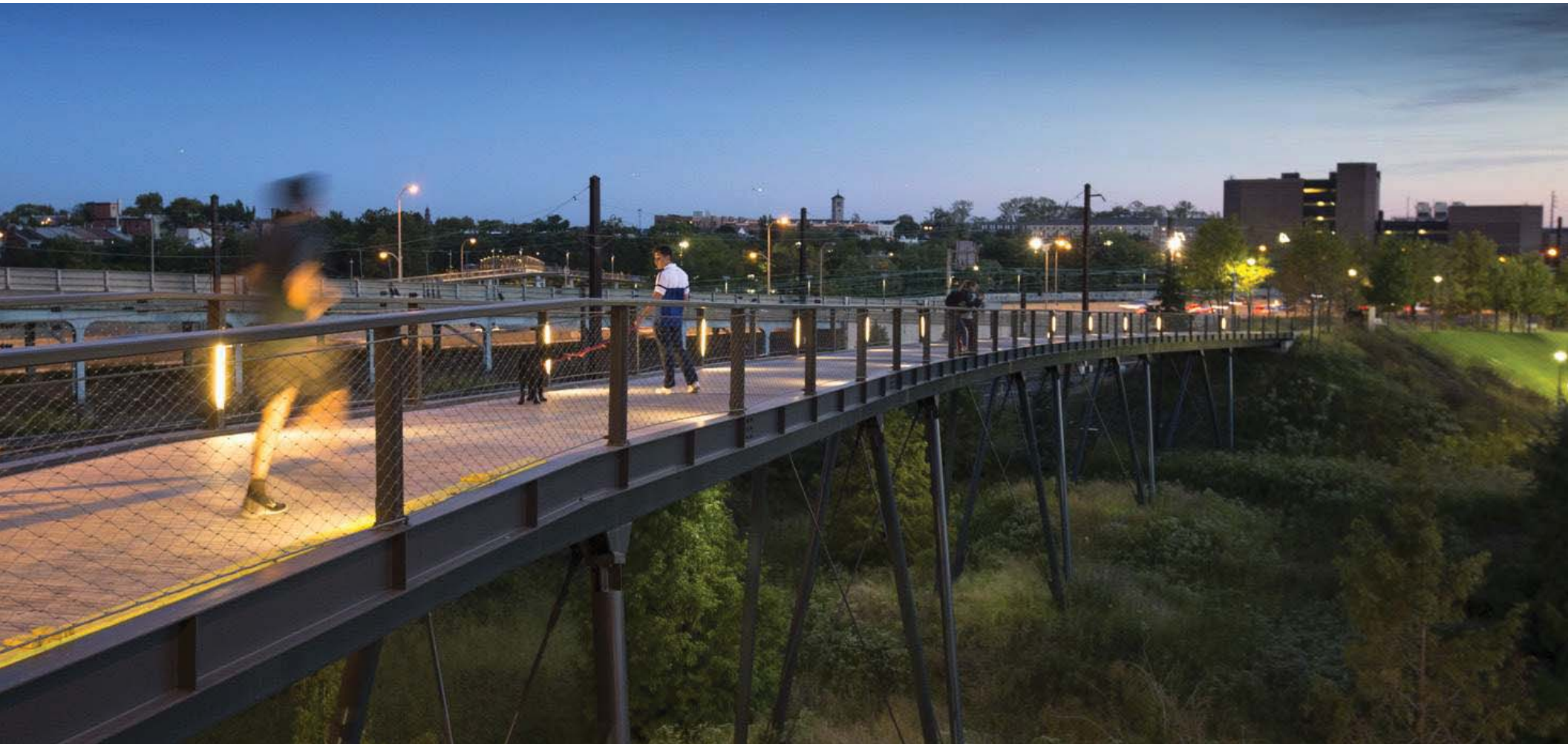
Plants and Seasonal Interest



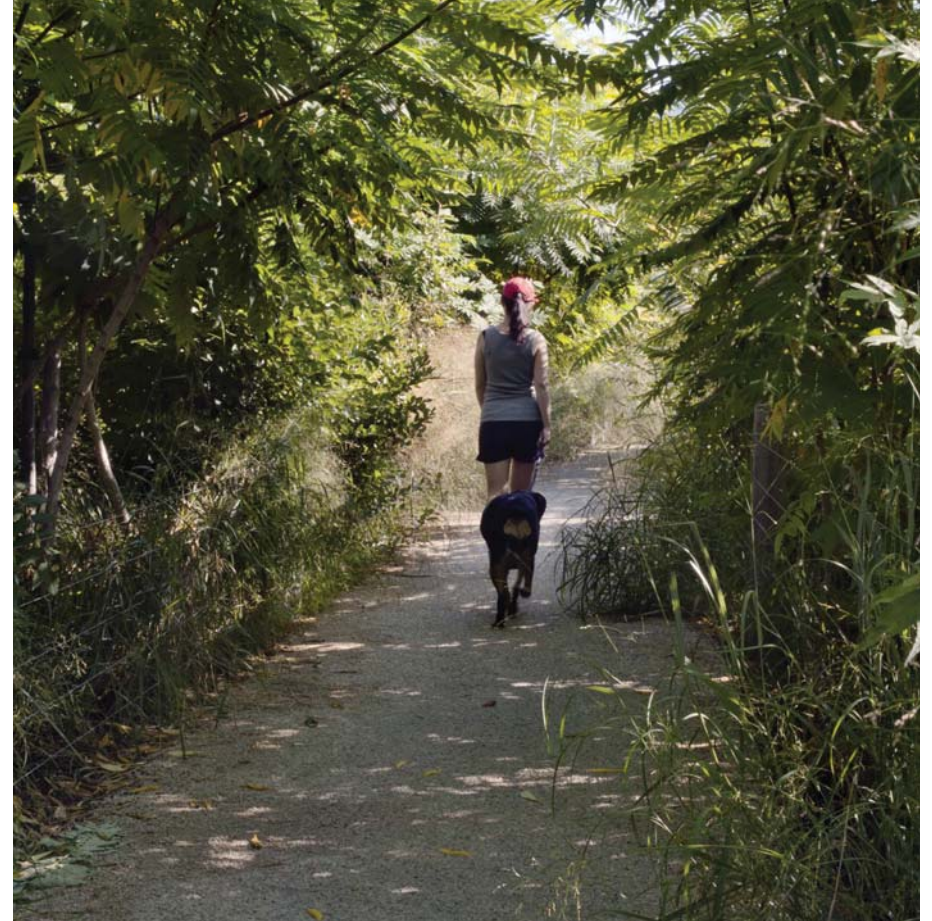
Support Wildlife

4. Strengthen Neighborhood Connections and Improve Park Circulation.

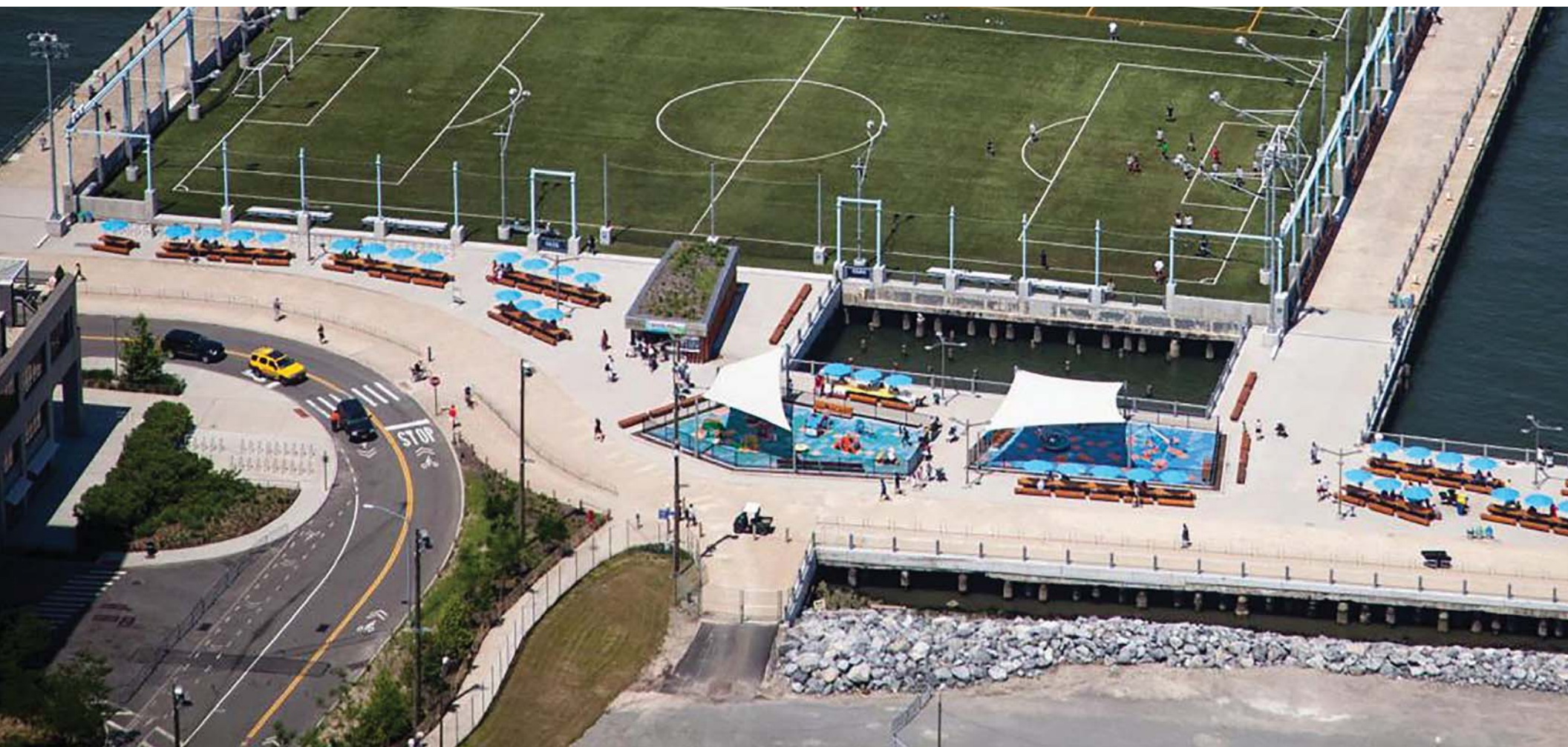
Provide safe, welcoming, and accessible entrances to the park to facilitate arrival from surrounding neighborhoods. Establish a hierarchical circulation network that allows visitors to move and experience the park in unique ways.



Integrate a Safe & Accessible Pedestrian and Bike Bridge into the Park



Establish a Hierarchy of Pedestrian Paths



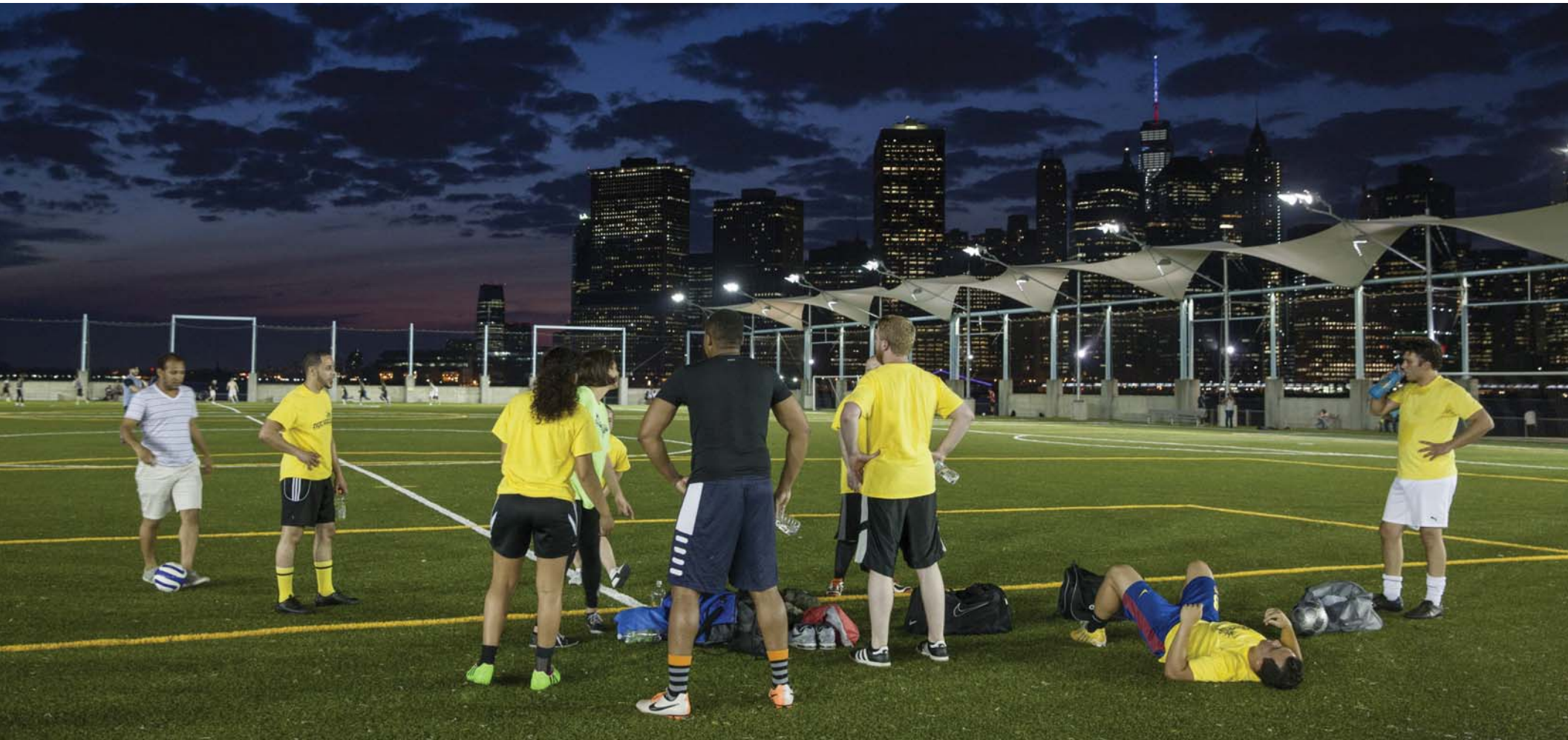
Extend Vehicular, Bike, and Pedestrian Circulation to Reach Selective Programming



Integrate Parking into the Park

5. Make The Park a Welcoming and Diverse Place for Everyone to Enjoy Year-round.

Orchestrate an ensemble of diverse and flexible spaces that provide opportunities for active recreation, passive uses, and temporary occupation throughout the year for Buffalonians of all backgrounds and age ranges.



Places for Organized Sports



Places for Unstructured Recreation



Places for Year-round Use



Places to Take In Views



Places to Engage with Water



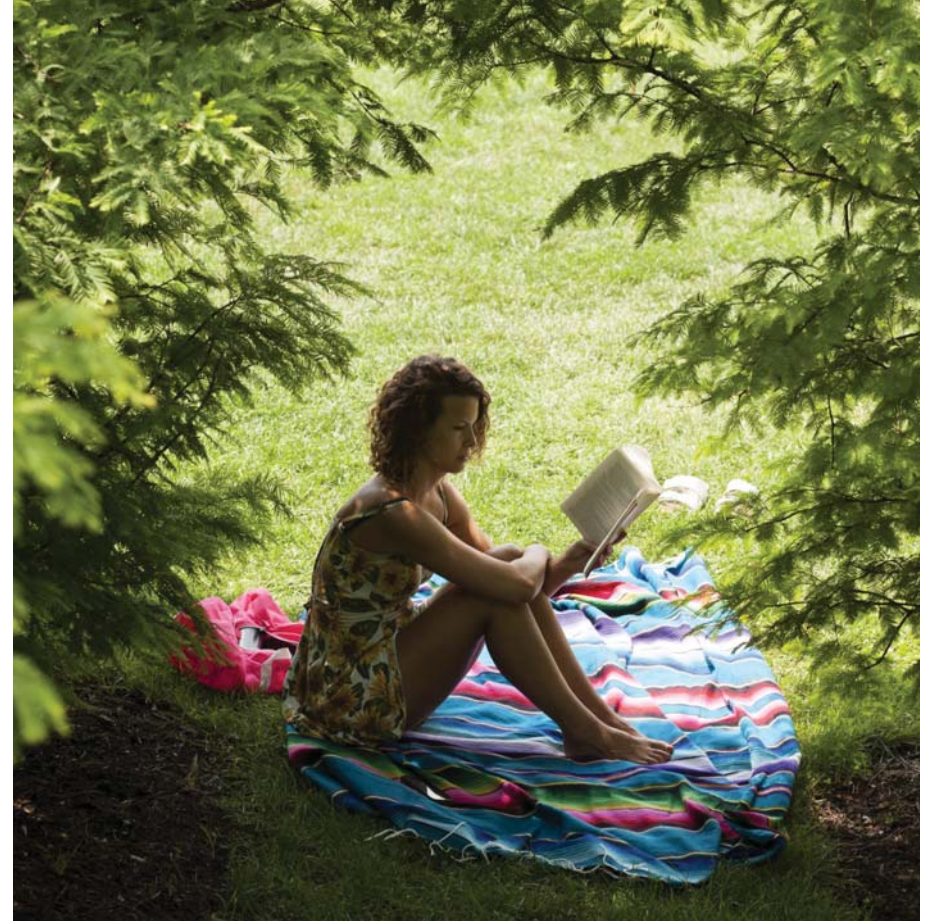
Places for Exploration



Places for Play



Places for Families



Places for Groups and Individuals



Places for Dogs



Flexible Places that can be Temporarily Owned



Places for Delight



Places for Temporary Art Pieces



Places for Respite



Places for Assembly



Ralph C. Wilson, Jr. Centennial Park will continue to be a Place for All!

Where in the Park Do You Go Most Frequently?

Grand Strand Community Center
Grand Strand High School
Grand Strand Elementary School
Grand Strand Canal
Lake Erie
Grand Strand Pier

Scale: 0 100 200 Feet
North Arrow

Map by: Grand Strand Community Center

Give us your Thoughts on Active Recreation

The collage features 16 images of active recreation projects in New York City:






- 1. A group of people playing basketball on a court.
- 2. A person walking on a path with a large, colorful, abstract sculpture in the background.
- 3. A person walking on a path with a large, colorful, abstract sculpture in the background.
- 4. A group of people playing basketball on a court.
- 5. A person walking on a path with a large, colorful, abstract sculpture in the background.
- 6. A group of people playing basketball on a court.
- 7. A person walking on a path with a large, colorful, abstract sculpture in the background.
- 8. A group of people playing basketball on a court.
- 9. A person walking on a path with a large, colorful, abstract sculpture in the background.
- 10. A group of people playing basketball on a court.
- 11. A person walking on a path with a large, colorful, abstract sculpture in the background.
- 12. A group of people playing basketball on a court.
- 13. A person walking on a path with a large, colorful, abstract sculpture in the background.
- 14. A group of people playing basketball on a court.
- 15. A person walking on a path with a large, colorful, abstract sculpture in the background.
- 16. A group of people playing basketball on a court.

At the bottom of the collage, there are logos for the following organizations:

- NYC Department of Parks and Recreation
- NYC Department of Transportation
- NYC Department of Social Services
- NYC Department of Health and Mental Hygiene
- NYC Department of Education
- NYC Department of Housing Preservation and Development
- NYC Department of City Planning
- NYC Department of Finance
- NYC Department of Information Technology and Telecommunications
- NYC Department of Records and Communications
- NYC Department of External Affairs
- NYC Department of Law
- NYC Department of Consumer Affairs
- NYC Department of Small Business Services
- NYC Department of Economic Development
- NYC Department of Environmental Protection
- NYC Department of Parks and Recreation

Give us your Thoughts on Accessible Circulation

12 January 2019 - Community Kick-Off Meeting

Cultural Events	Event Pavilion	Planting	Wildlife
<p>What cultural activities/events do you do at the park?</p> <p>What cultural activities/events would you like to see at the park?</p>	<p>What event at the pavilion do you attend throughout the year?</p> <p>What kind of event would you like to see at the pavilion?</p>	<p>What garden/park/lane is at or near Buffalo do you find has an inspiring landscape?</p> <p>Do you have any favorite plants? What do you like about it?</p>	<p>Are you a birder/birdwatcher?</p> <p>Where do you do most of your birdwatching in or near Buffalo?</p> <p>What specific types of birds have you seen at Lafayette Park?</p>
<p>Circle with questions per item</p>	<p>Circle with questions per item</p>	<p>Circle with questions per item</p>	<p>Circle with questions per item</p>
<p>Athletics</p> <p>Do you play sports through an organized league or informal pick-up games?</p> <p>What other recreational activities would encourage year-round use?</p>	<p>Playgrounds</p> <p>Which playground at Lafayette do you use most and why?</p> <p>What play equipment is missing? What would improve the experience at the pool and splashpad?</p>	<p>Water Access</p> <p>How would you like to engage with the water?</p> <p>What activities would you do?</p>	<p>Food</p> <p>When would you most likely buy food at the park?</p> <p>Are there food events currently happening in Buffalo that could take place at the park?</p>
<p>Circle with questions per item</p>	<p>Circle with questions per item</p>	<p>Circle with questions per item</p>	<p>Circle with questions per item</p>

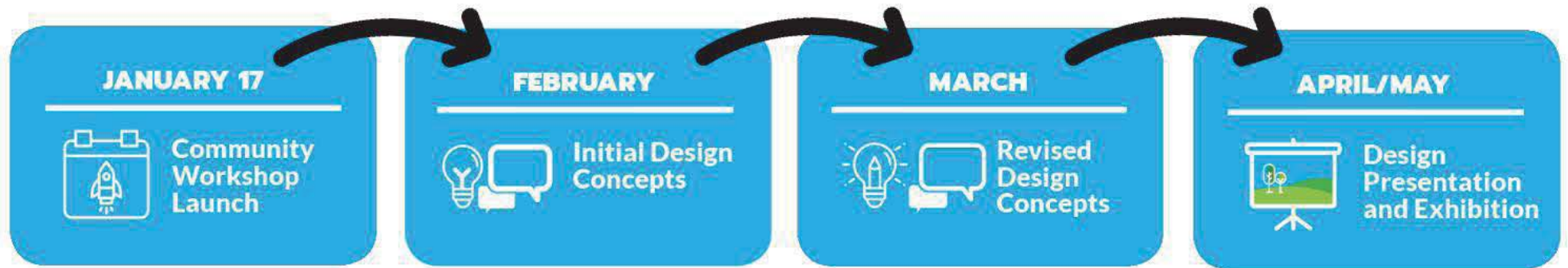
[illegible]

Worksession - Feedback Stations



Exploring Design Concepts Together

Community Workshops to transform LaSalle Park into Ralph C. Wilson, Jr. Centennial Park



A community-driven process that builds off community feedback every step of the way.