



# WELCOME



# AGENDA

---



## **A look back on the Imagine LaSalle Process**

*What has the past 3 years of engagement looked like?*

## **Where we are today**

*An update on park design*

## **A look forward**

*Panel discussion on next steps with key project partners*

# BEFORE WE GET STARTED...



A few meeting logistics

- **Meeting is being recorded and will be available on [ImagineLaSalle.org](http://ImagineLaSalle.org) at a later date**

*The recorded video will include Spanish captions*

- **Questions or comments can be entered in the chat**

*We will address questions in the facilitated discussion portion of the meeting as time allows.*

# Where We Are in the Process

SUMMER & FALL  
2018



## Discovering the Community's Vision

Community-driven vision process summarized in the [Community Vision Report](#). \$50 million gift announced for redesign of LaSalle Park!

WINTER & SPRING  
2019



## Exploring Design Concepts Together

Community workshops build off the vision by exploring conceptual designs together.

FALL 2019  
TO 2020



## Designing the Details

Conceptual designs are refined in detail and design materials are prepared for construction with ongoing input from the community.

MARCH 2021  
.....  
SPRING 2022

**WE ARE HERE**



## Preparing for the Transformation

Detailed designs are complete, and construction drawings will be created in preparation for bidding. Additional funding for infrastructure will be explored and the conservancy governance structured formed.

SPRING 2022  
AND BEYOND  
→



## Transforming LaSalle Park Into Ralph C. Wilson, Jr. Centennial Park

Through continued public collaboration, park construction will strategically minimize disruptions to existing park uses.

Summer - Fall 2018  
**Discovering the  
Community's Vision**



1,164 survey responses

**332** photos taken by kids from  
the Belle Center!

Focus group visited  
**3 cities, 21 parks**  
And took 800+ photos!



# WINTER & SPRING 2019



## Exploring Design Concepts Together

*Thousands of comments at design workshops, model exhibit, focus group meetings, and other sessions.*



# FALL 2019 TO 2020

---



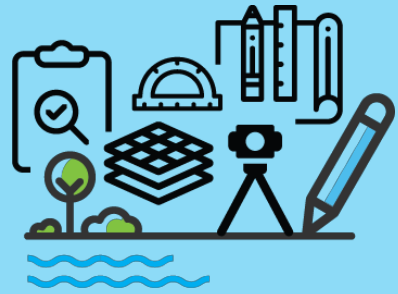
## Designing the Details

---

*Technical stakeholder and focus group meetings, interactive workshops with children, and a public workshop with a large-scale model.*

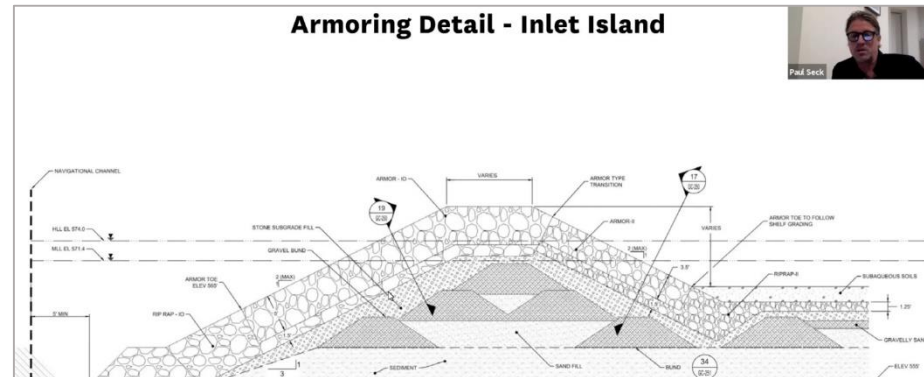
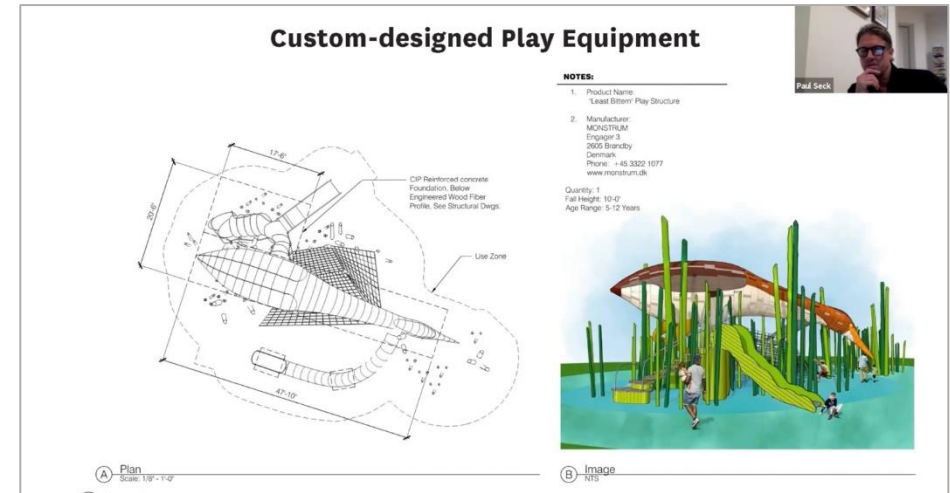


# JANUARY 2021



## Preparing for transformation

*Presenting 100% DD scheme, discussing the opportunity for park sustainability through a new city partnership with Ralph Wilson Park Conservancy.*

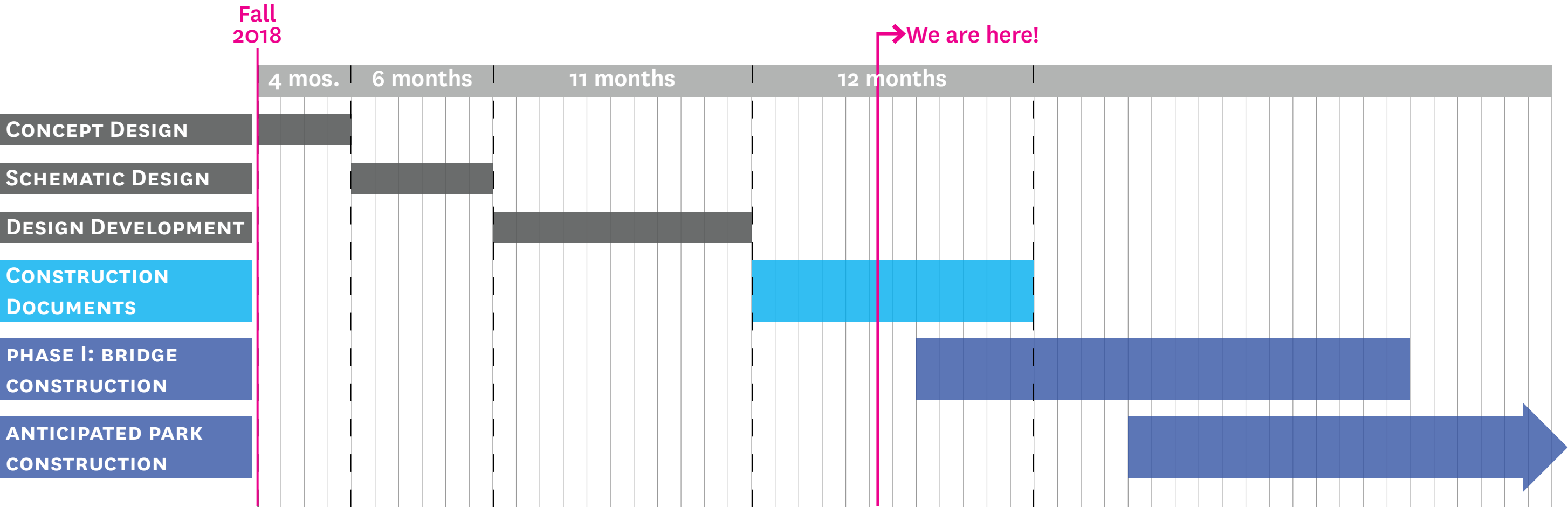


# Ralph C. Wilson, Jr. Centennial Park

City of Buffalo | Buffalo Urban Development Corporation

MVVA | 10 November 2021

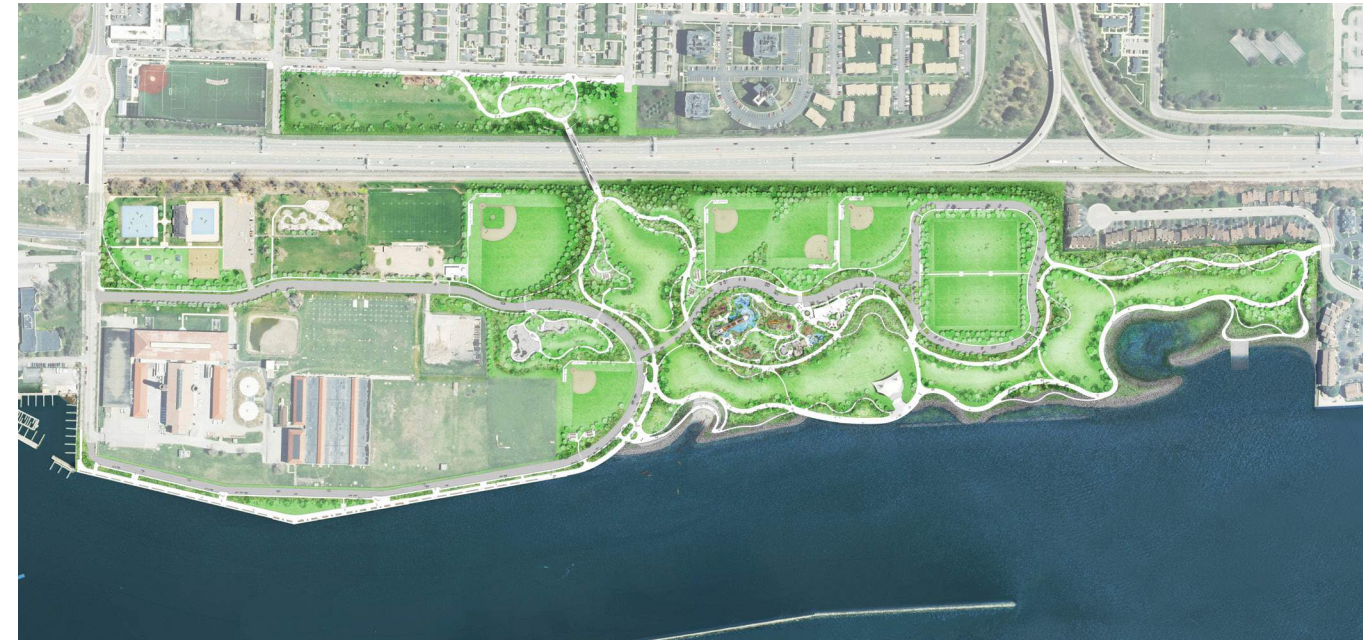
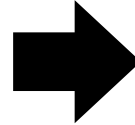
# Project Schedule



# Design Changes



**100% DD - December 2020**



**CD Progress - November 2021**

# Ralph C. Wilson Jr. Centennial Park

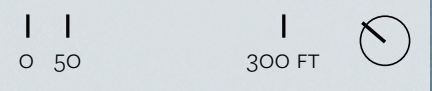


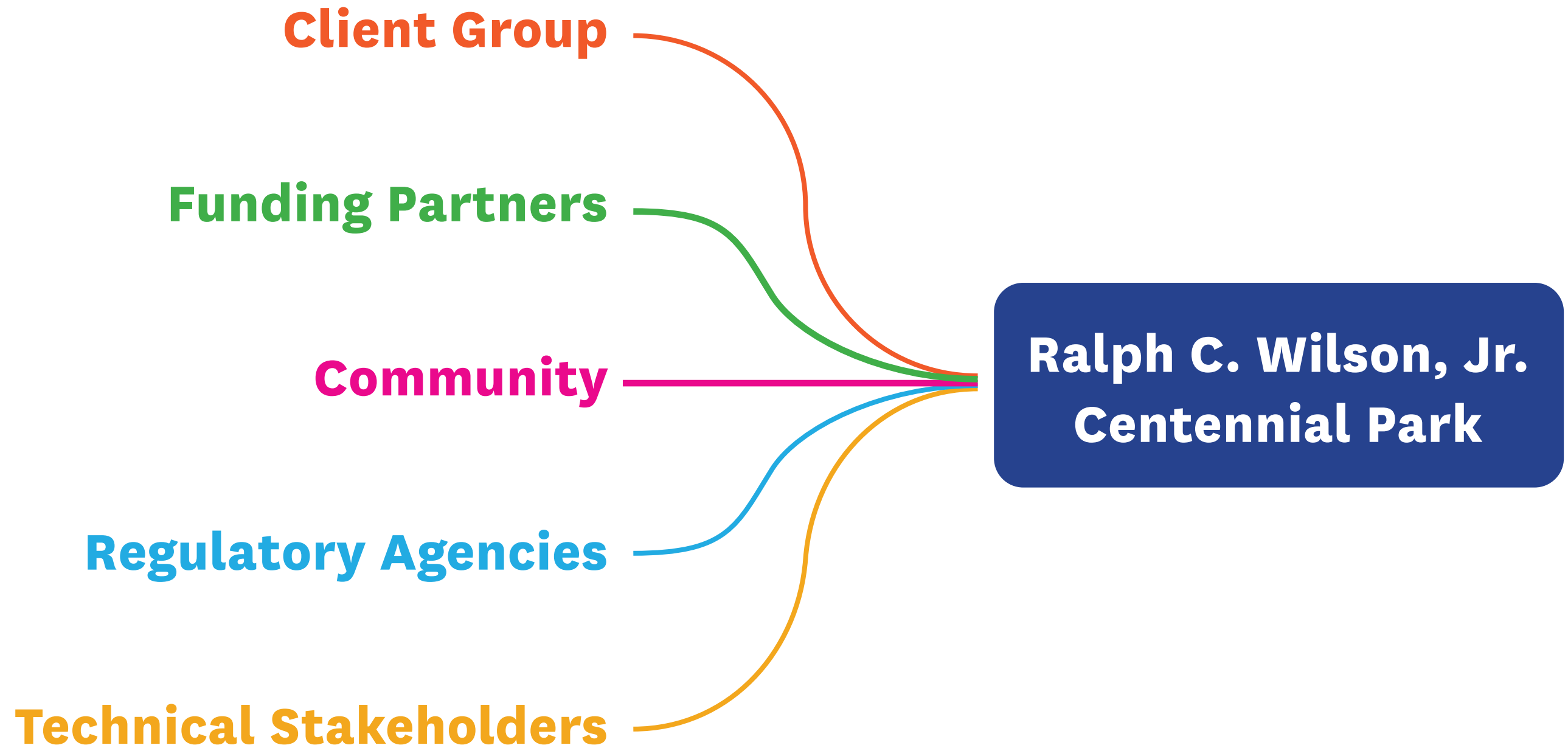
# Shoreline at RCWJCP



Blueway Site

Inlet





# Regulatory Agencies | Funding Partners



# Shoreline Design Goals



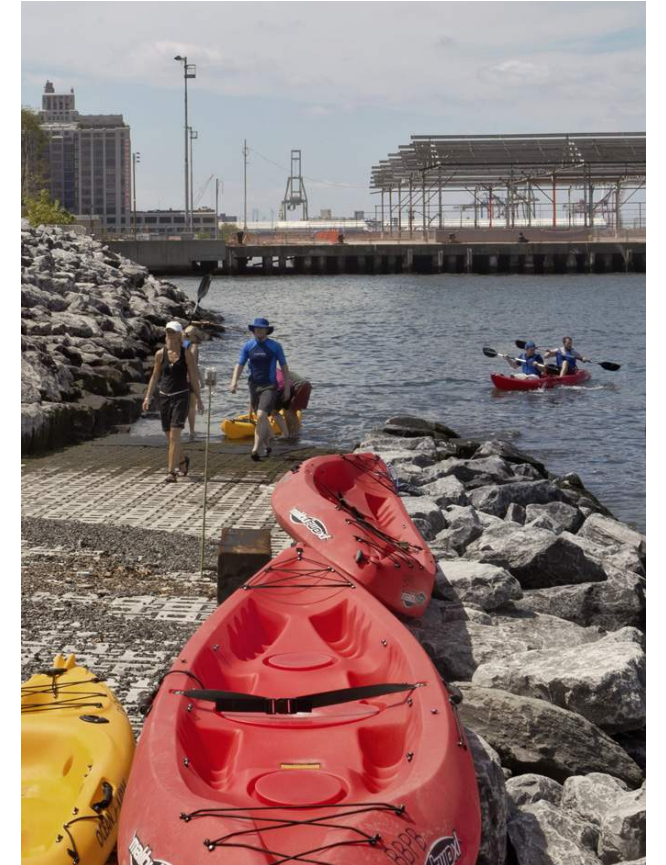
**Structural  
Resiliency**



**Flood  
Protection**



**Ecological  
Function Uplift**

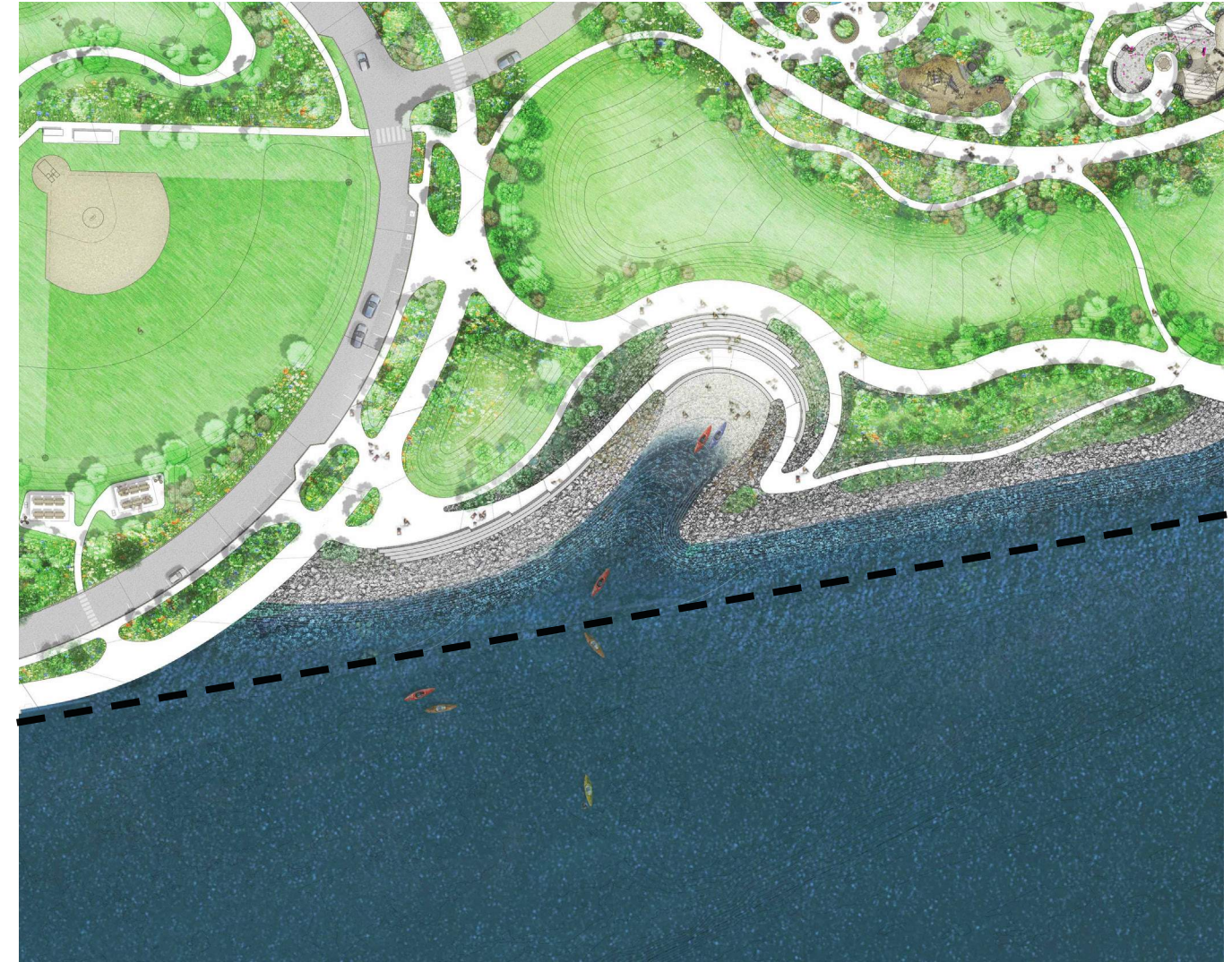
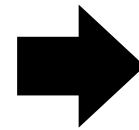


**Enhanced  
Experience**

# Blueway Site

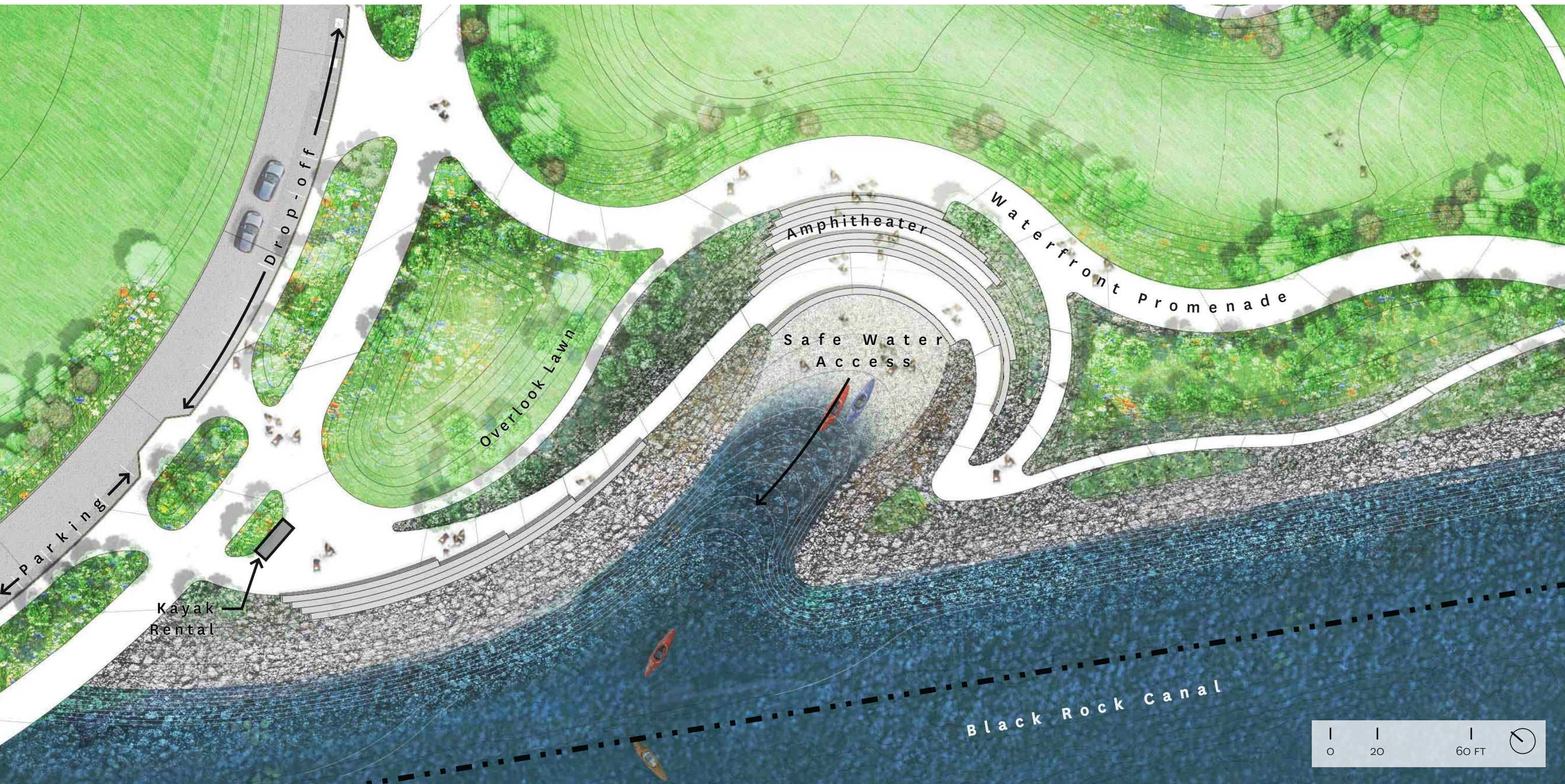


**100% DD - December 2020**



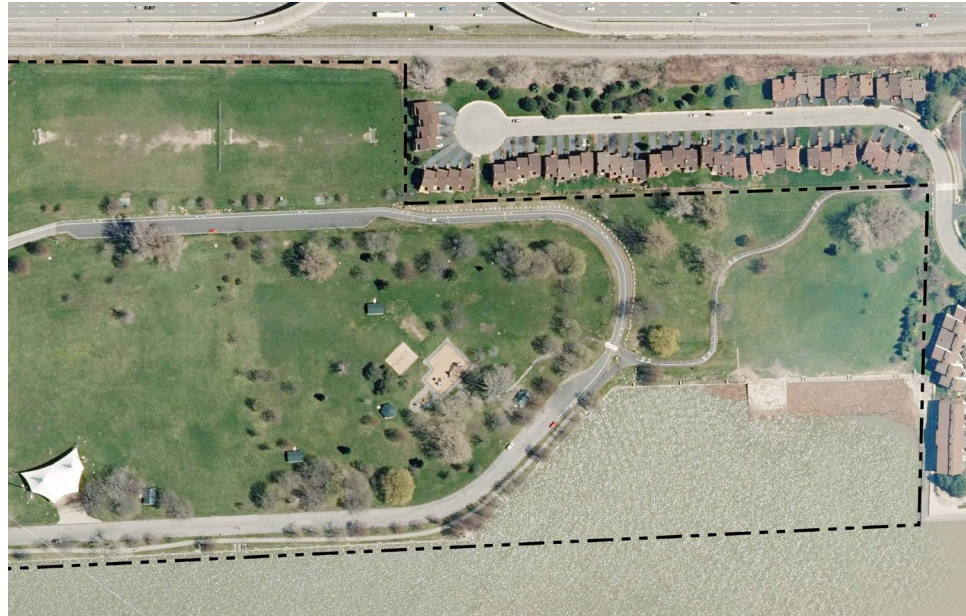
**CD Progress - November 2021**

# Blueway Site - November 2021





# Inlet Alternatives Studied



**Alternative 1: No Action**



**Alternative 2: Rip Rap Shoreline**



**Alternative 2A: Modified Inlet Island**



**Alternative 3: Enhanced Inlet Habitat Creation**

# **Inlet Alternatives - Parameters**

- 1. Project Goals Achieved.**
- 2. Existing SAV Protection and Disturbance.**
- 3. Quantity and Type of Habitat Created.**
- 4. Net Total Habitat Gain.**
- 5. Land Surface Converted into Water Surface and Vice Versa.**
- 6. Construction Cost and Available Funding.**

# Inlet Alternatives - Outcome



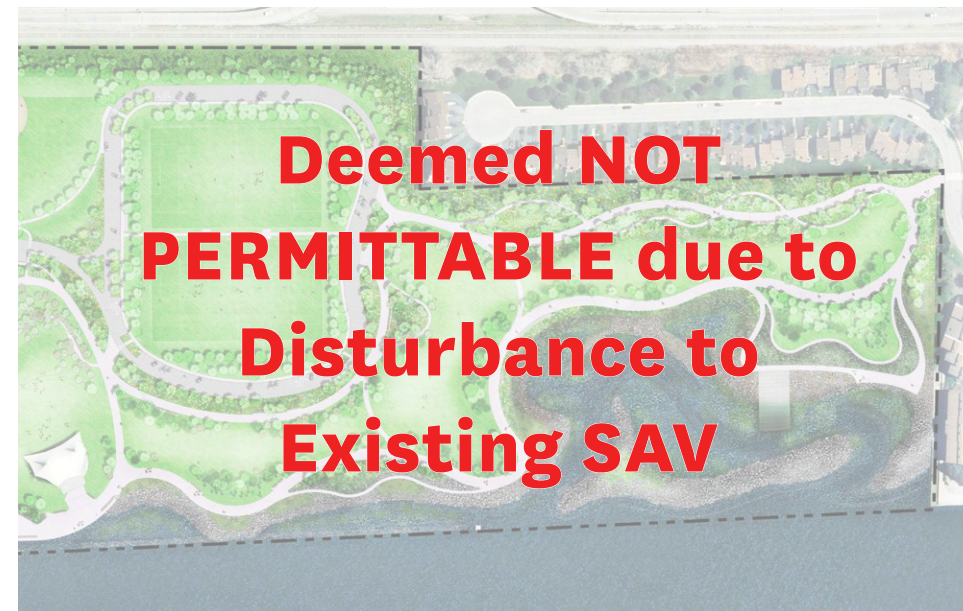
**Alternative 1: No Action**



**Alternative 2: Rip Rap Shoreline**



**Alternative 2A: Modified Inlet Island**

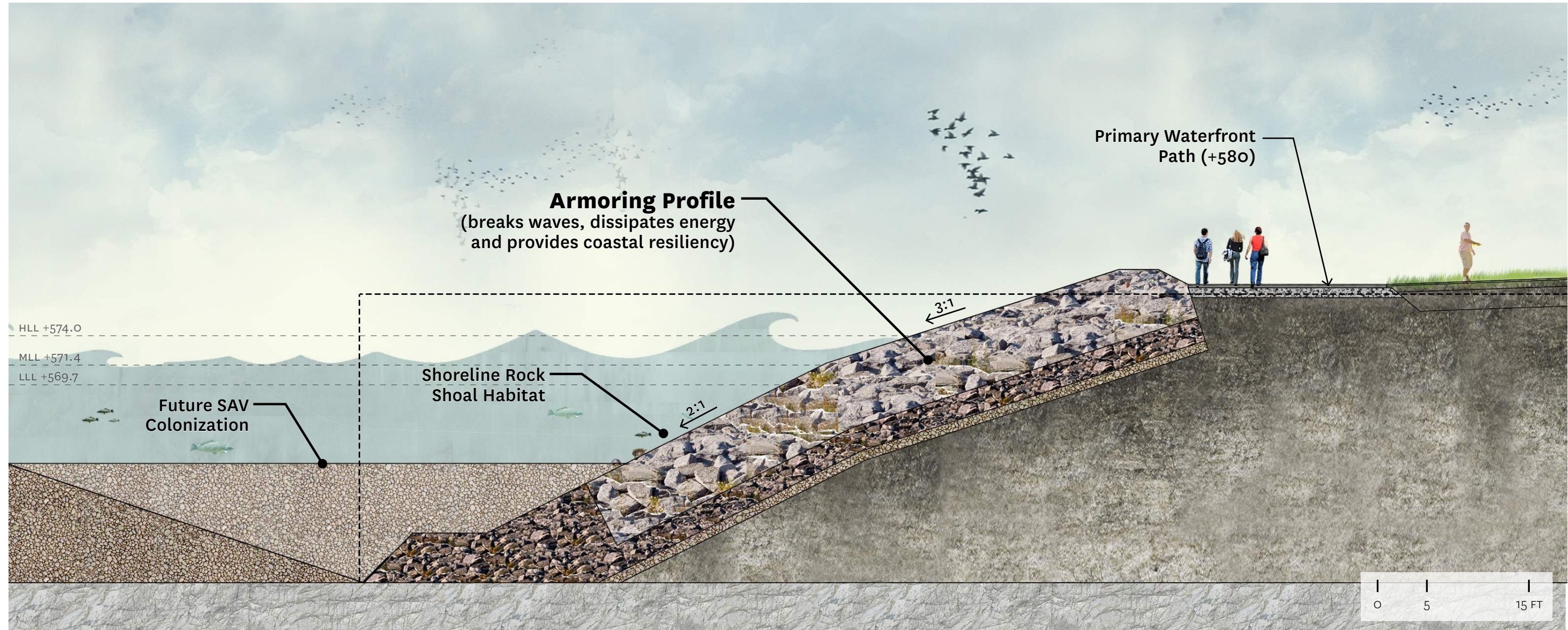


**Alternative 3: Enhanced Inlet Habitat Creation**

# Inlet Alternative 2A

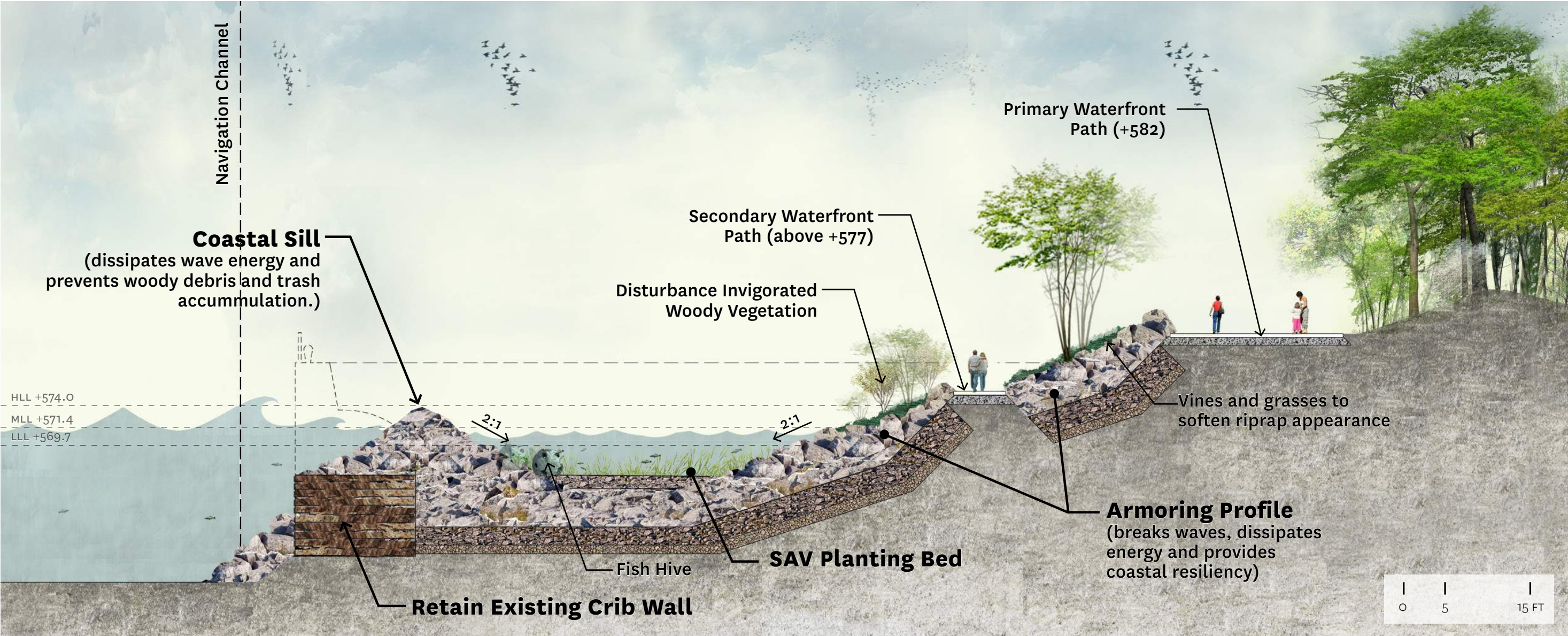


# Armored Slope



\* Note: Section profile to be adjusted based on hydrological modeling results.

# Armored Slope with Coastal Sill



\* Note: Section profile to be adjusted based on hydrological modeling results.



# Shoreline Plant Communities

## Submerged Aquatic Vegetation



## Deep Emergent Vegetation



## Shallow Emergent Vegetation

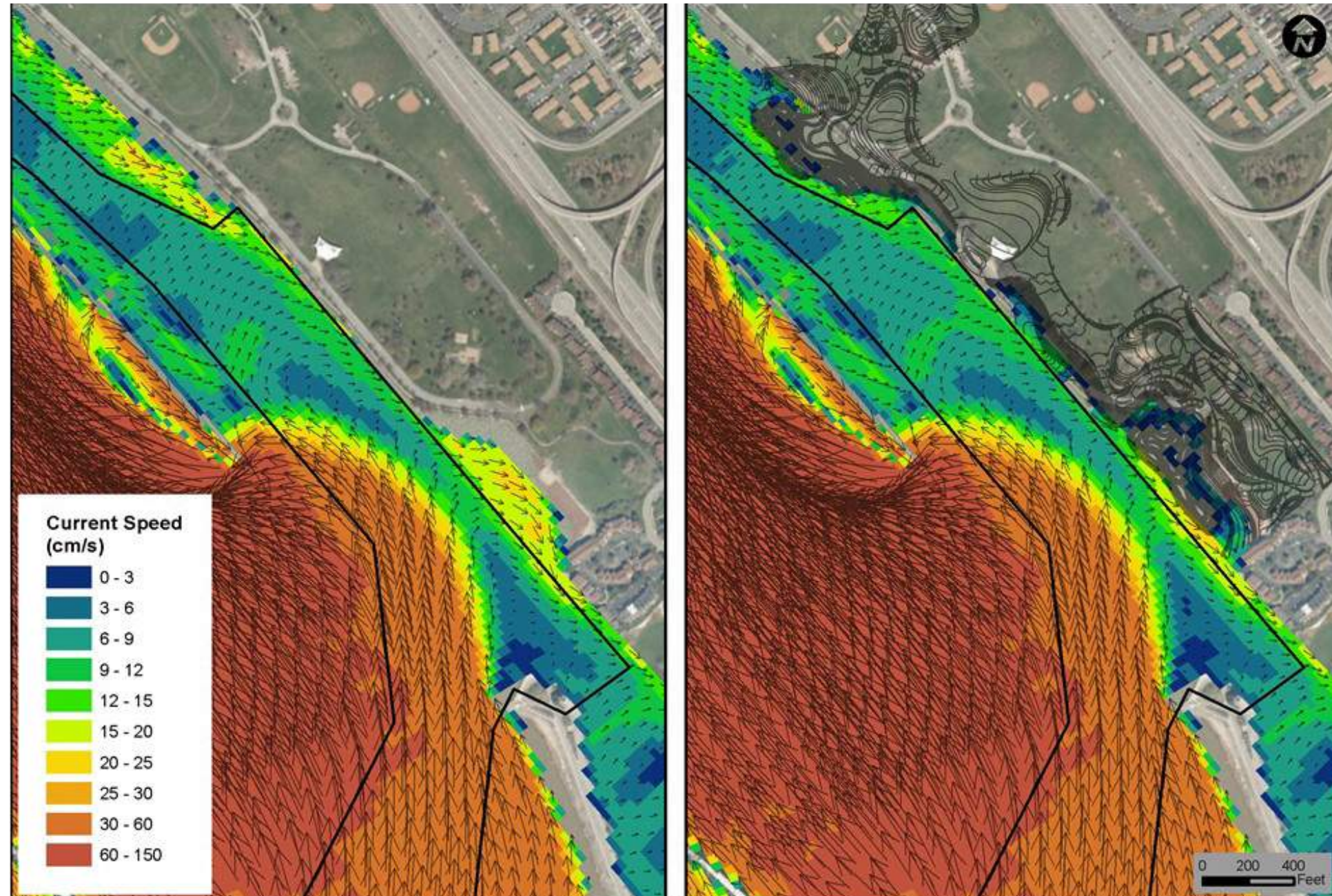


## High Marsh

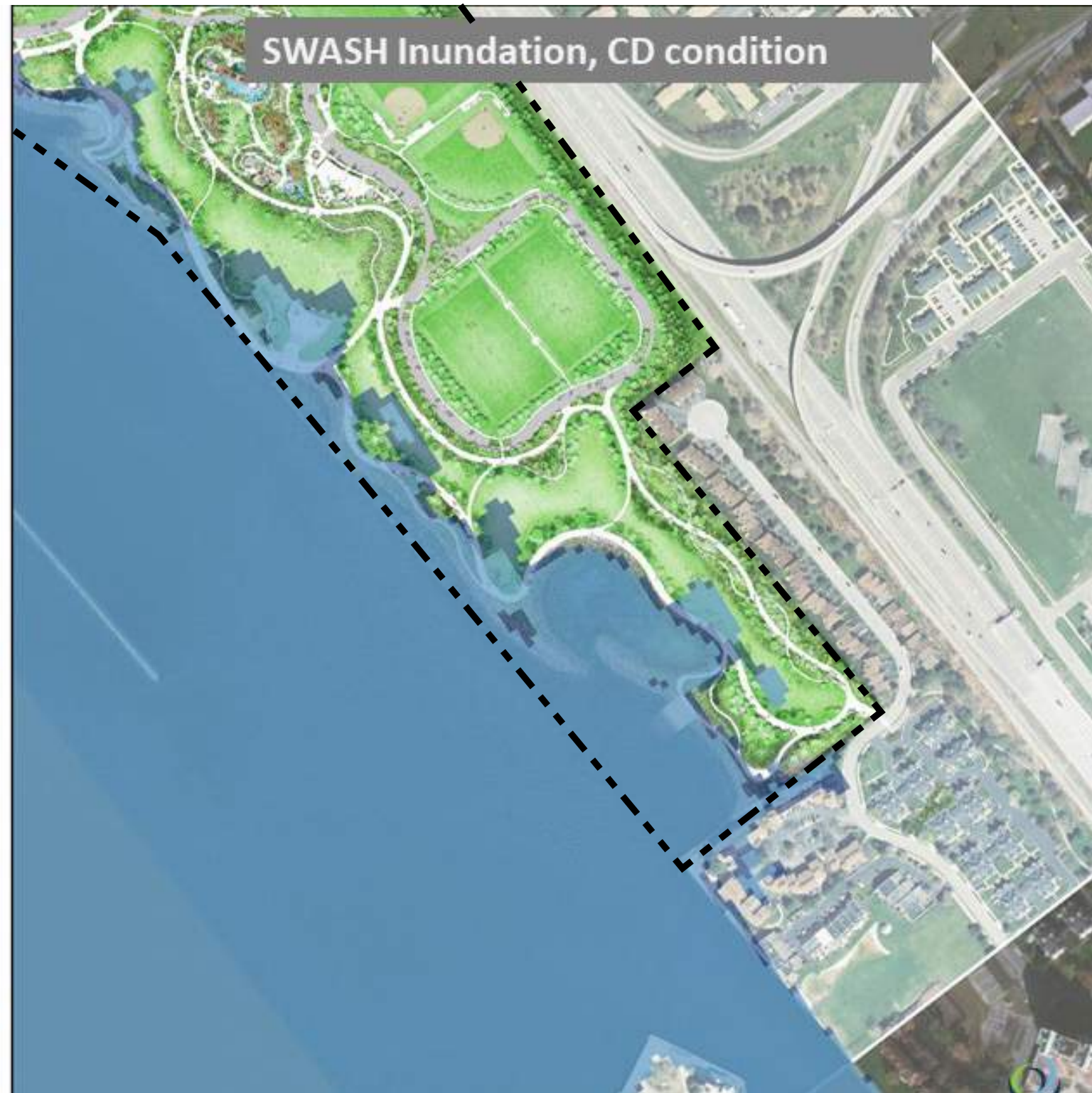
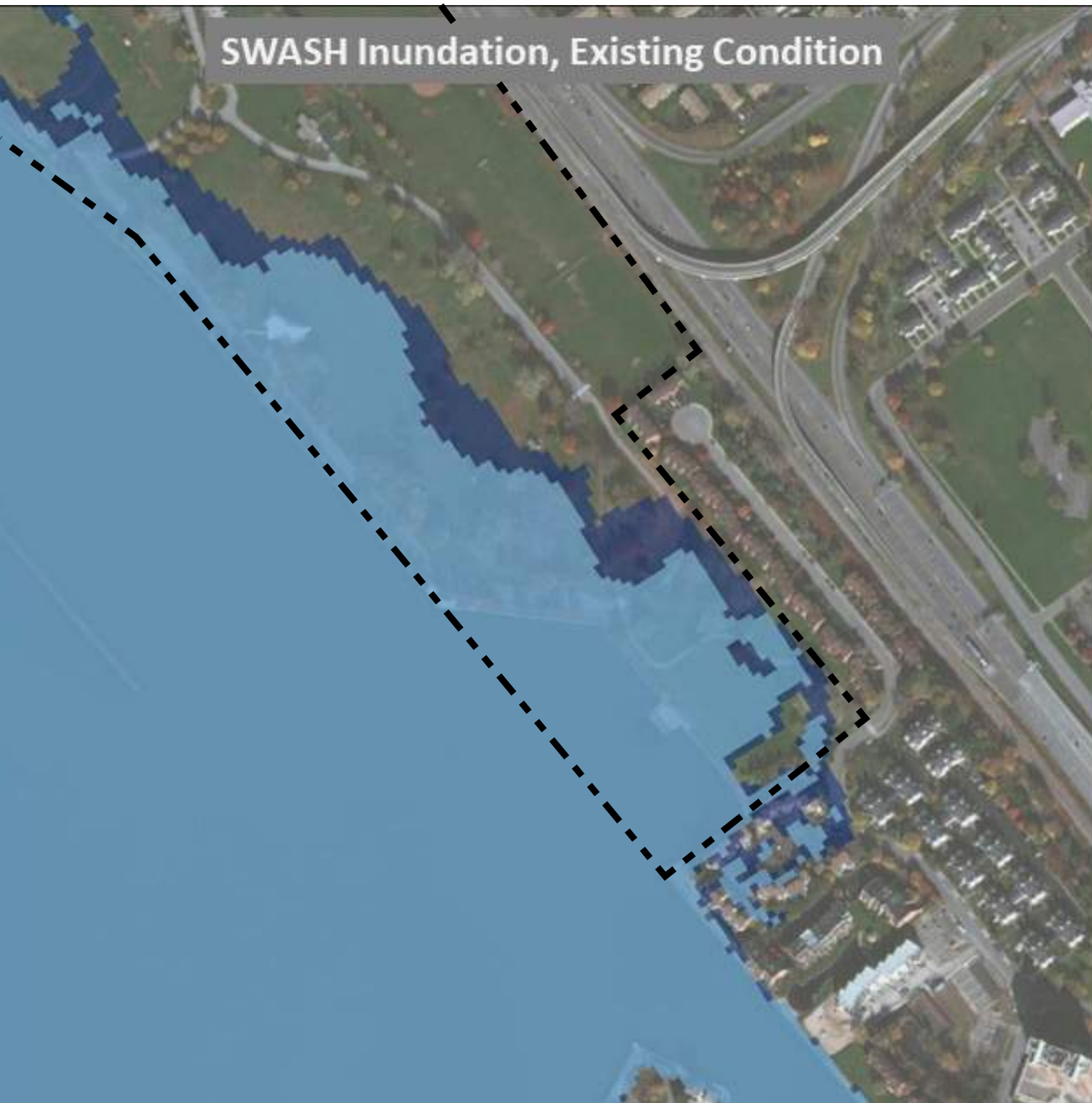


# Analyzing Shoreline Performance through Hydrological Modeling

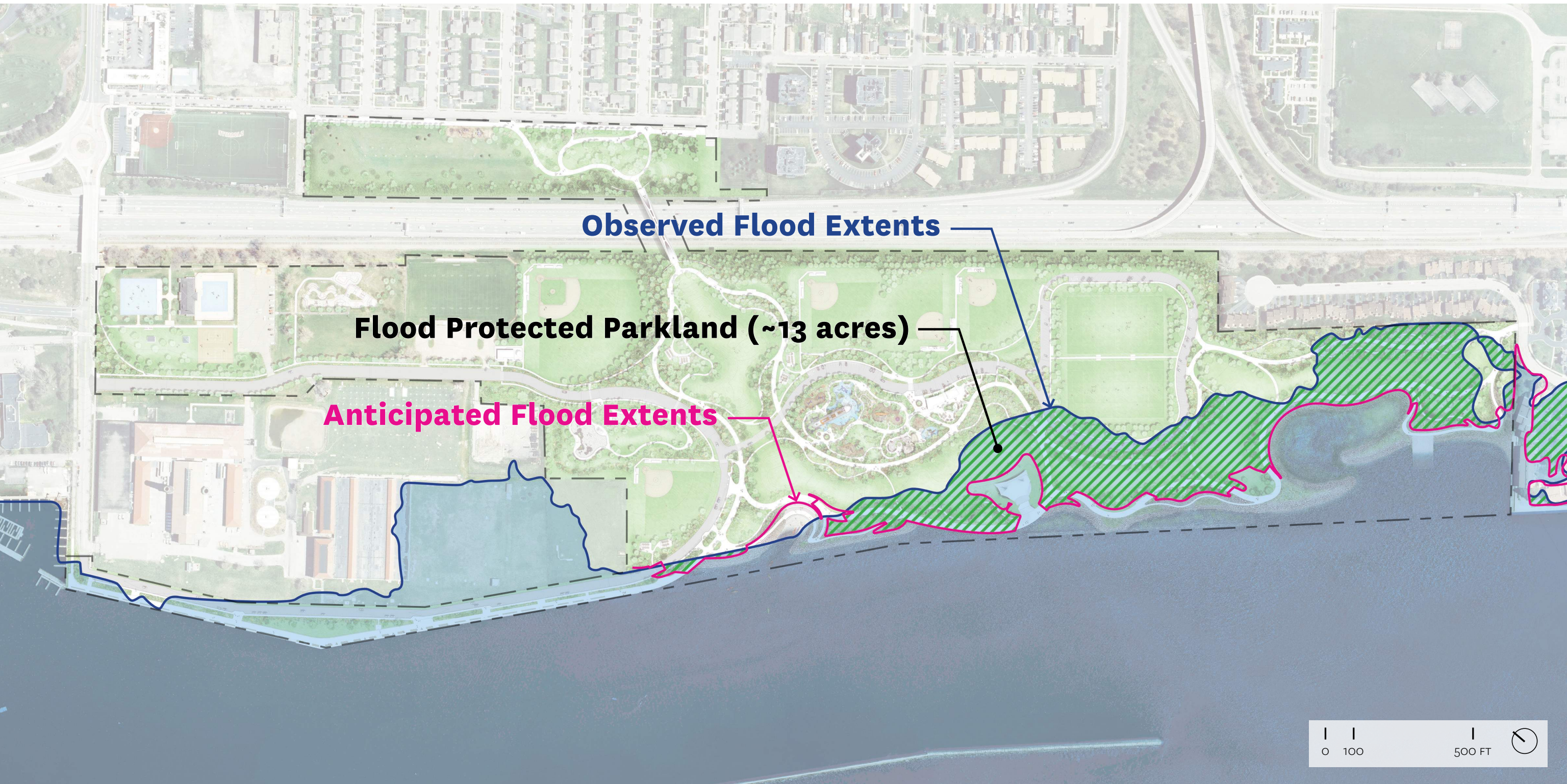
- Flooding.
- Wave, seiche, and ice.
- Water flow.
- Water velocity as it relates to aquatic habitat.
- Particle tracking simulation (sediment and debris accumulation.)



# Analyzing Flooding through Hydrological Modeling

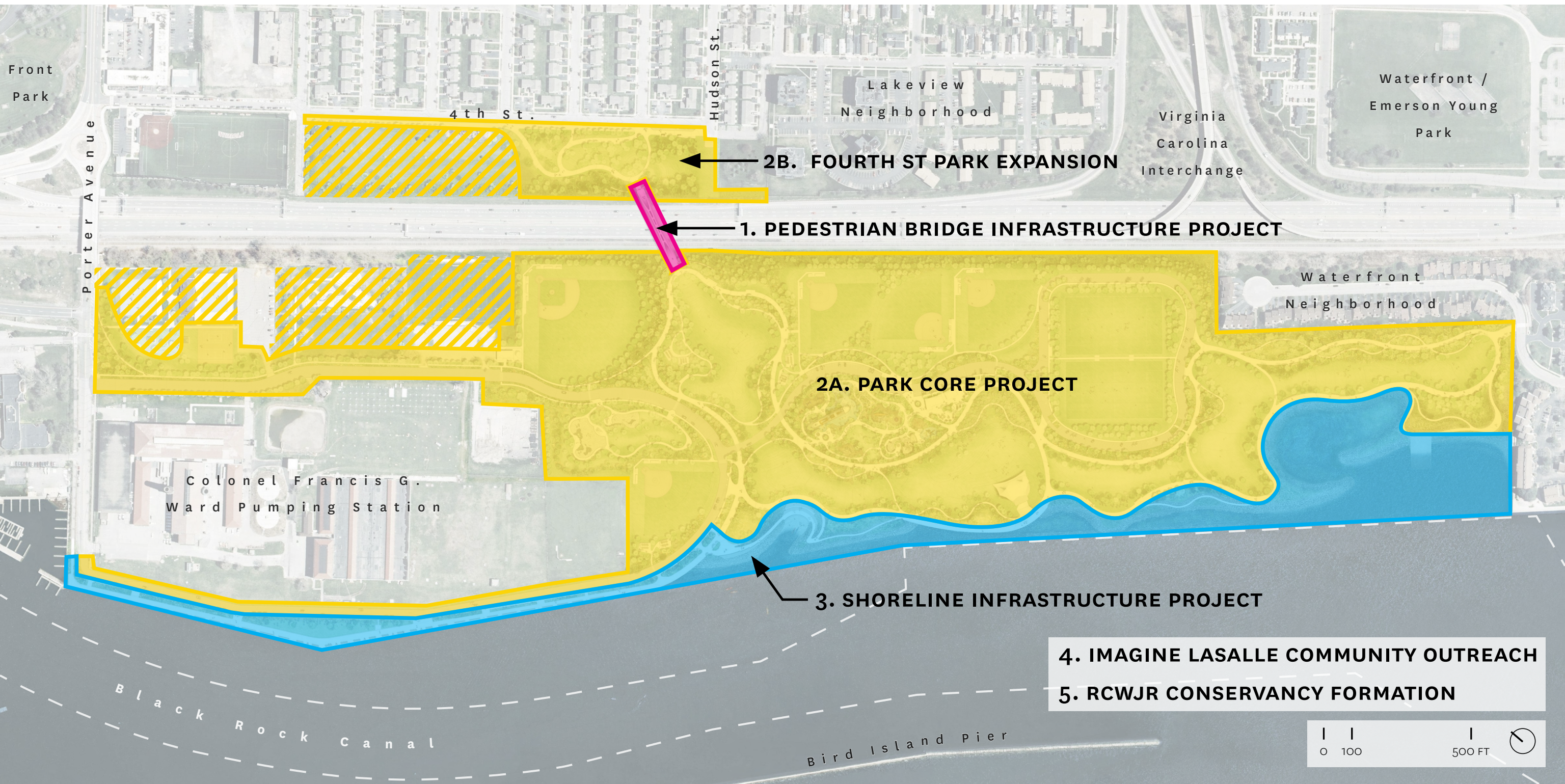


# Flood Protection at RCWJCP





# Ralph C. Wilson Jr. Centennial Park - Projects



# Ralph C. Wilson Jr. Centennial Park - Adjacent Projects





# Thank You



## Ralph Wilson Park Involvement Form



### Ralph Wilson Park Involvement Form

The Ralph Wilson Park Conservancy will work in partnership with the city of Buffalo to operate, maintain, and promote the public use of Ralph C. Wilson, Jr. Centennial Park. The Conservancy plans to continue the strong community engagement built through the Imagine LaSalle process.

If you are interested in remaining involved or becoming involved in the Park through committees, volunteer efforts, or other ways, we ask that you fill out this brief form. Responses will help the Conservancy connect with individuals and other stakeholders as we continue building on the already vibrant activities within the Park and move toward the next phase of this exciting venture for the City of Buffalo, its residents, and its neighborhoods.



For more project resources and to stay up to date on upcoming community updates visit:

# ImagineLaSalle.org